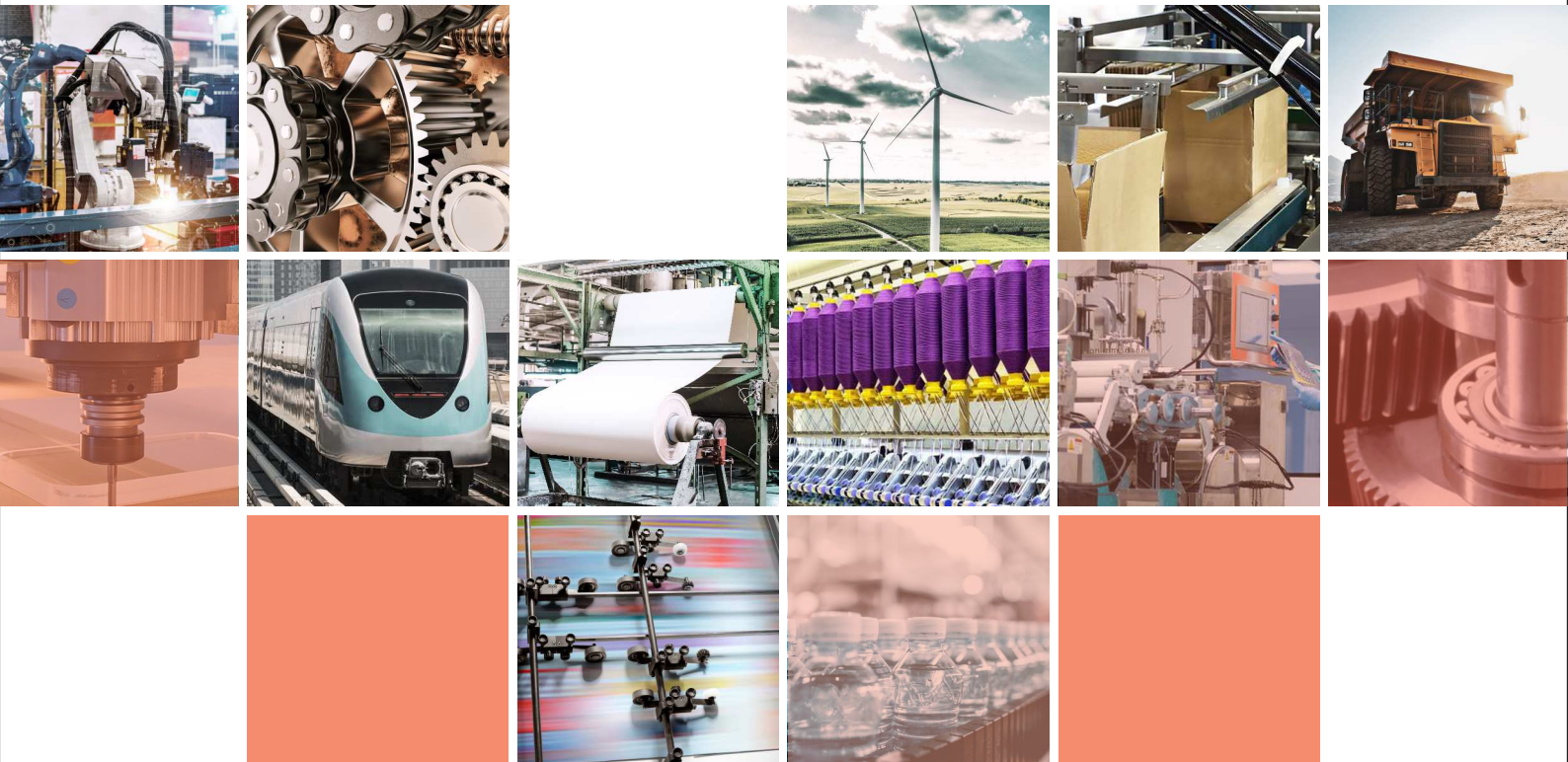


AMBICA ENTERPRISE



WE PROVIDE
BEST QUALITY
PRODUCT!!

srathod15ambica@gmail.com



Ambica Traders is one of the leading business enterprises situated in Ahmedabad. Since its establishment in 1990, it has become a well-known name in Bearings and Linear motion products.

We are committed towards continuous product expansion in order to reach a wide range of industries. We provide value-added services with the help of our knowledgeable team. We adopt a customer-centric approach by understanding specific business and industrial needs and cater to those needs by being knowledge partners.

We leave no stone unturned to supply quality products on the button. We aim to spread our wings with a positive analytical approach by focusing on every possible business aspect and being acquainted with changing market trends.

We endeavor to conduct our business affairs with the highest ethical standards and diligent work. Our mission is to supply the best possible components that feed every mechanism.



- Why Choose Us**
- Healthy Relationship
 - Prompt service
 - Competitive price
 - Business Excellence
 - Genuine Quality

Mission
Our Mission is to become one of the most trusted and reliable partner with industries to supply a wide range of quality products, provide highest value for money and best service to our customers.

Vision
We envision to provide a complete range of spares required for reliable operation of all kind of industries and overcome the industry specific challenges.



The Schaeffler Group - At a Glance

Schaeffler is the leading global supplier to the automotive and industrial sectors. We have been driving forward groundbreaking inventions and developments in the fields of motion and mobility for over 70 years. With innovative technologies, products, and services for CO₂ efficient drives, electric mobility, Industry 4.0, digitalisation, and renewable energies, we are a reliable partner for making motion and mobility more efficient, intelligent, and sustainable.

The Group has operations in 200 locations worldwide, with 75 production facilities in 23 countries, 20 R&D centres and a workforce of 83,300 employees. Renowned for its proven track record in launching innovative products, the Group has been granted over 26,000 patent registrations so far. Schaeffler AG, the Group's flagship company, is a publicly listed stock corporation incorporated under the German law. with its registered office in Herzogenaurach. The Group owns majority stake in Schaeffler India.



Divisions & Services

Automotive Technologies

The Automotive Aftermarket division is responsible for the global spare parts business and delivers innovative repair solutions in original equipment quality.

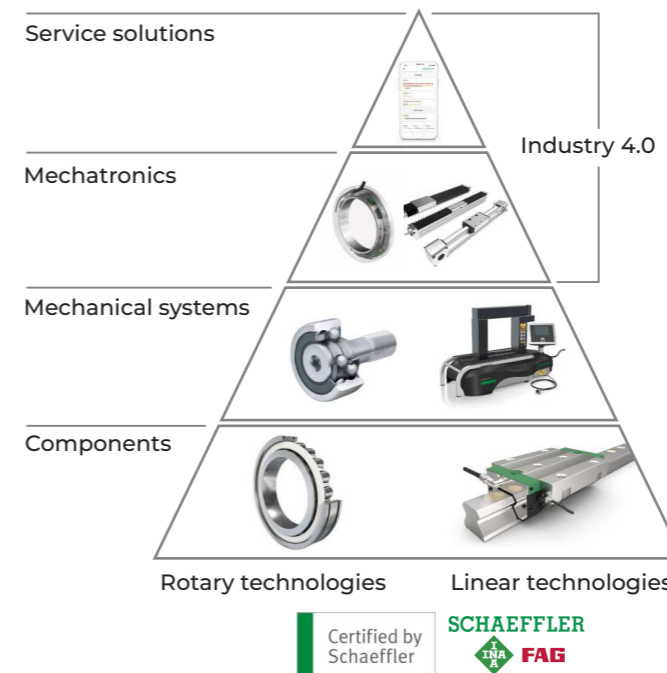
Automotive Aftermarket

Groundbreaking products for vehicles with drive trains based on internal combustion engines as well as for hybrid and electric vehicles.

Industry













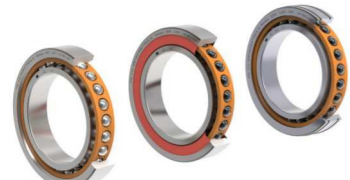


Rolling and plain bearings, linear and direct drive technology, and a range of services including maintenance products and monitoring systems.

Industrial business - Precise. Reliable. Connected



Schaeffler's Industrial division develops and manufactures components and systems for rotary and linear motion and offers services for various industrial sectors. Spread across eight key sectors, the business is backed by a wide network of competent distributors, and is the preferred technology partner for a wide array of customers across the region.

The industrial division's product portfolio includes rolling and plain bearing solutions, linear technology, maintenance products, monitoring systems and direct drive technology. Bearing solutions cover a wide range from high-speed and high-precision bearings with small diameters to large bearings, several metres wide. Bearing applications include drive technology, production machinery and wind turbines, as well as process industry.

<p>Deep Groove Ball Bearing</p> 	<p>Spherical Roller Bearing</p> 	<p>Linear Guides</p> 
<p>Plain Bearings</p> 	<p>Cylindrical Roller Bearing</p> 	<p>Housing Units</p> 
<p>Mechatronic Solution</p> 	<p>Grease</p> 	<p>Lubricants</p> 
<p>Lubricator</p> 	<p>Optime</p> 	<p>Rod-end Bearings</p> 
<p>Spindle Bearings</p> 	<p>Taper Roller Bearing</p> 	<p>Inductive Heating Device</p> 

Linear Guideways

HG – Machine Tools

Heavy load ball type linear guideway with high rigidity, high accuracy, high load carrying capacity and self-aligning capability.



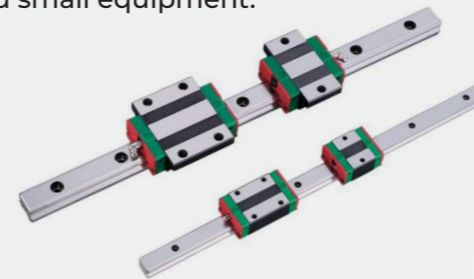
RG – High Rigidity Application

High rigidity roller type liner guideway features roller as line contact element, during heavy load lead subtle lastic deformation, achieving longer service life.



EG – Automation Industry

Low profile ball type liner guideway high load capacity in all four directions low-profile assembly and shorter block length is suitable for high speed industrial machine and small equipment.



MG – Medical & Semiconductor

- Compact size, light weight, suitable for miniature equipment application.
- Gothic four-point contact design, strong rigidity for all direct and high precision.
- Steel balls are held by a retainer, interchangeable under accuracy permit.



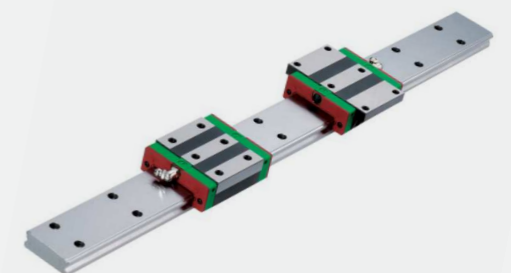
QE – Highspeed Requirement

- Quiet linear guideway with synch motion technology
- Equipped with patented synch motion which offers low noise, smooth movement, superior lubrication and longer product life time.



WE – Single Axes Equipment

Four-row wide rail linear guideway wider rail width and low-profile design offer high torque and resistance.



Rolled Ballscrew

The major differences between a rolled and ground ballscrew are the manufacturing process, the lead error definition and geometrical tolerances. Hiwin rolled ballscrews are made through a rolling process. Rolled ballscrews provide smooth movement and low friction which can be supplied quickly from stock, at a lower production cost.



Precision Ground Ballscrew

Hiwin precision ballscrews are made through a grinding process of the screw spindle. Precision ground ballscrews provide high positioning accuracy and repeatability, smooth movement and long service life. These highly efficient ballscrews are a perfect solution for a variety of applications.



Industrial Single-Axis Robot

- Easy for system design, installation and maintenance
- Compact and lightweight
- High accuracy and high stiffness
- Well equipped with required accessories
- Design optimization (high stiffness + lightweight structure)



Linear Actuator

Linear actuators are compact, lightweight and highly flexible products that can be found in a wide range of applications. Linear actuators utilize a gear system that is connected to a screw and is driven by a motor. As the motor operates, the gearing translates to the screw shaft, converting rotary motion into linear motion.



SBI Series Ball Guide



- Smooth motion with large permissible load
- High rigidity in all directions
- Low noise

Rolled Ball Screw



- High reliability
- Smooth operation
- High rigidity without backlash

Ball Screw Support Units

BK



BF



FK



FF



Linear Hardened Chrome Plated Shaft

Linear Shaft



Linear Shaft with Support



End Support

SH Type



SHF Type



Linear Bearings

LM Type



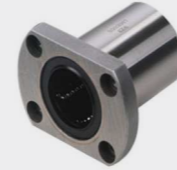
LMF Type



LMFC Type



LMH Type



LMK Type



LMKC Type



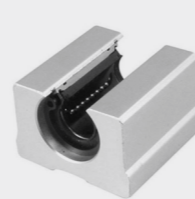
LM-OP Type



SC Type



SME Type



Auxiliary Linear Motion Products

Precision Locknut



Ball Screw Nut Housing



Rack and Pinion



Cable Carrier



Coupling

Spring Coupling



Oldham Coupling



Jaw Coupling



Disc Coupling



Pedestal

UCF



UCFC



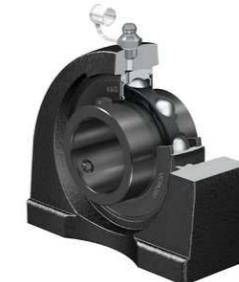
UCFL



UCP



UCPA



UCT



Rod end Bearing



Plummer Block



Sleeve



Plain Bearing



Grease



Chain



Pneumatic Cylinder



Mini Cylinder



Thin Type Cylinder



Double Shaft Cylinder



Tri Rod Cylinder



Rotational Platform (Gear Type)



Air Gripper



Preparation Unit



Fitting



- 100W – 3kW
- Position/Speed/torque & full close control modes
- High velocity response frequency
- Easy Tuning
- EtherCAT, CANopen, Modbus Communication
- 17bit/20bit absolute and incremental type servo motor



HMI



Planetary Gearbox

- Extremely high precision gearing and powerful stability.
- High efficiency and low noise control.
- Long constant operation service lifetime.
- Optimized inertia moment.
- Limited temperature rise.
- Flexible input mounting dimensions.
- Maintenance free for whole service.



SMPS

- Single output: 5V, 12V, 24V, 48V, Dual and multi output series available
- Overload & Short Circuit protection
- 100% full load burn-in test
- High efficiency
- High quality and reliability
- Low ripple & noise

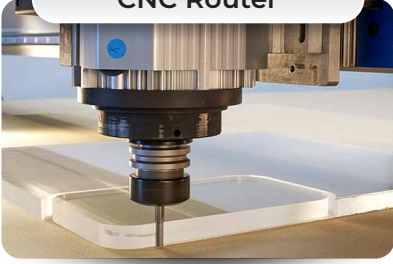


Linear Actuator

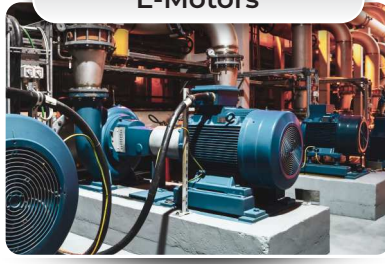
- Application:
- Hospital Equipment
 - Packaging Machinery
 - Manufacturing Machinery
 - Solar Panel
 - Robotics



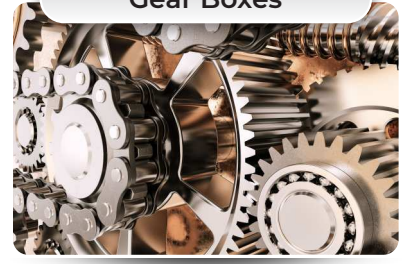
CNC Router



E-Motors



Gear Boxes



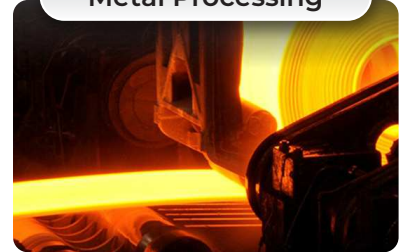
Industrial Automation



Industrial Robot



Metal Processing



Off-Road



Packaging Machinery



Paper Industry



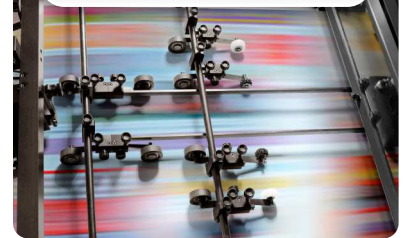
Pharmaceutical Industry



Power Transmission



Printing Machine



Rail



Textile Industry



Wind



AMBICA
ENTERPRISE

Certified by
Schaeffler



📍 B-1, Amarkunj Society, Shopping Center,
Opp. CMC, Near Tejendra Complex, Odhav,
Ahmedabad, Gujarat 382415

☎ +91 99092 70248, 84908 70248

✉ sraithod15ambica@gmail.com